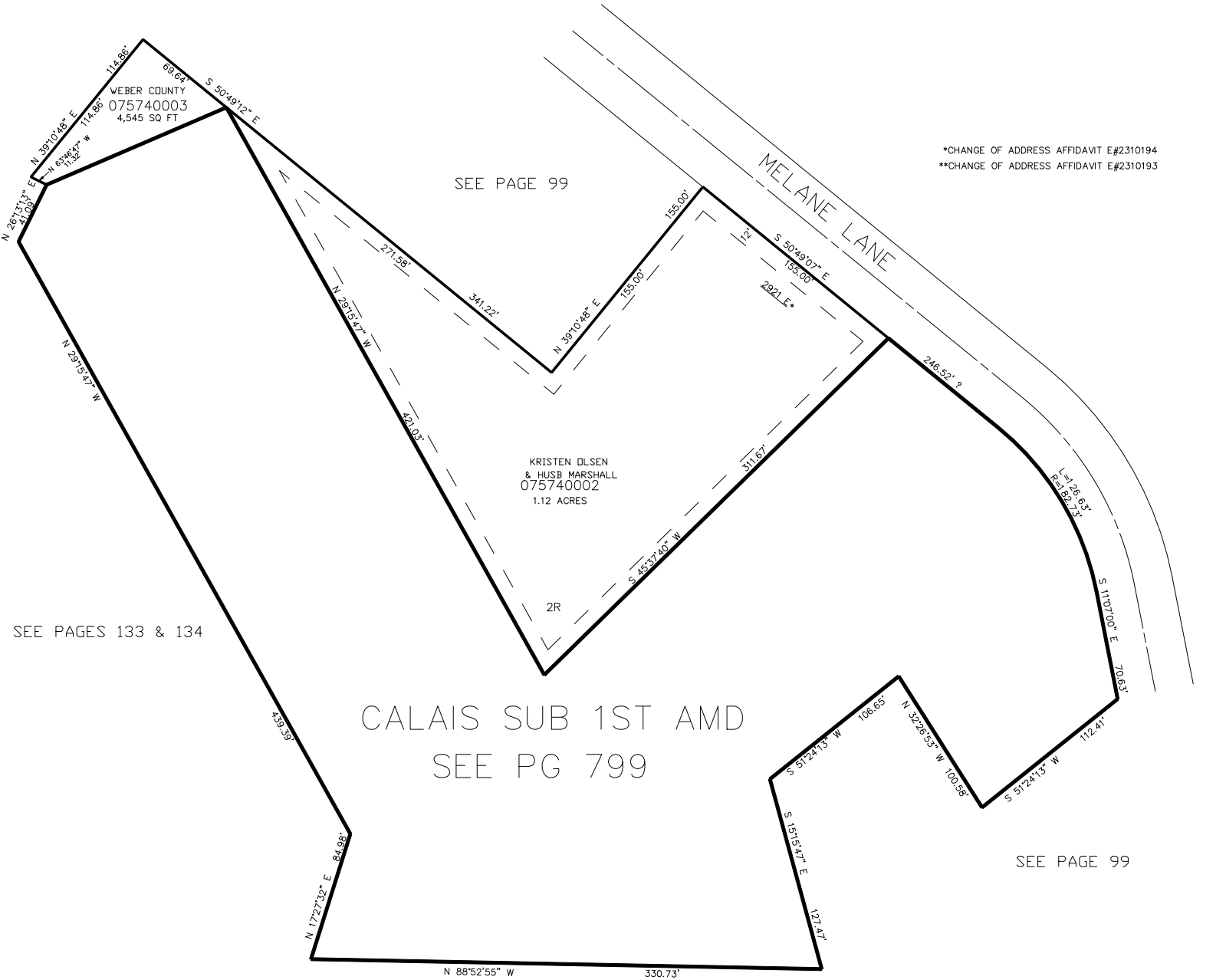


PART OF THE SW.1\4, OF SECTION 24, T.5N., R.1W., S.L.B. & M.  
**CALAIS SUBDIVISION**

IN WEBER COUNTY  
SCALE 1" = 50'

TAXING UNIT: 159



\*CHANGE OF ADDRESS AFFIDAVIT E#2310194  
\*\*CHANGE OF ADDRESS AFFIDAVIT E#2310193

SEE PAGES 133 & 134

CALAIS SUB 1ST AMD  
SEE PG 799

SEE PAGE 99

SEE PAGE 99

10' UTILITY & DRAINAGE EASEMENTS EACH  
SIDE OF PROPERTY LINES AS INDICATED  
BY DASHED LINES EXCEPT AS OTHERWISE  
SHOWN.

FOR COMPLETE ENG DATA SEE  
ORIGINAL DEDICATION PLAT IN  
BOOK 54, PAGE 8 OF RECORDS.